

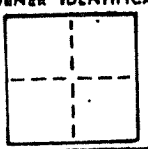
A.P.#64-243-05,15

CORNER RECORD

COUNTY OF MARIN T. _____ R. _____ MERIDIAN _____ CALIFORNIA

CORNER TYPE: GOVT. CORNER MEANDER RANCHO CONTROL OTHER

CORNER IDENTIFICATION — DATE OF VISIT _____ 19____



CORNER — LEFT AS FOUND FOUND AND TAGGED REESTABLISHED OBLITERATED CORNER RESULT

PHYSICAL DESCRIPTION OF CORNER FOUND, EVIDENCE AND METHOD USED TO IDENTIFY OR REESTABLISH

PHYSICAL DESCRIPTION OF MONUMENTS REBUILT OR PERPETUATED

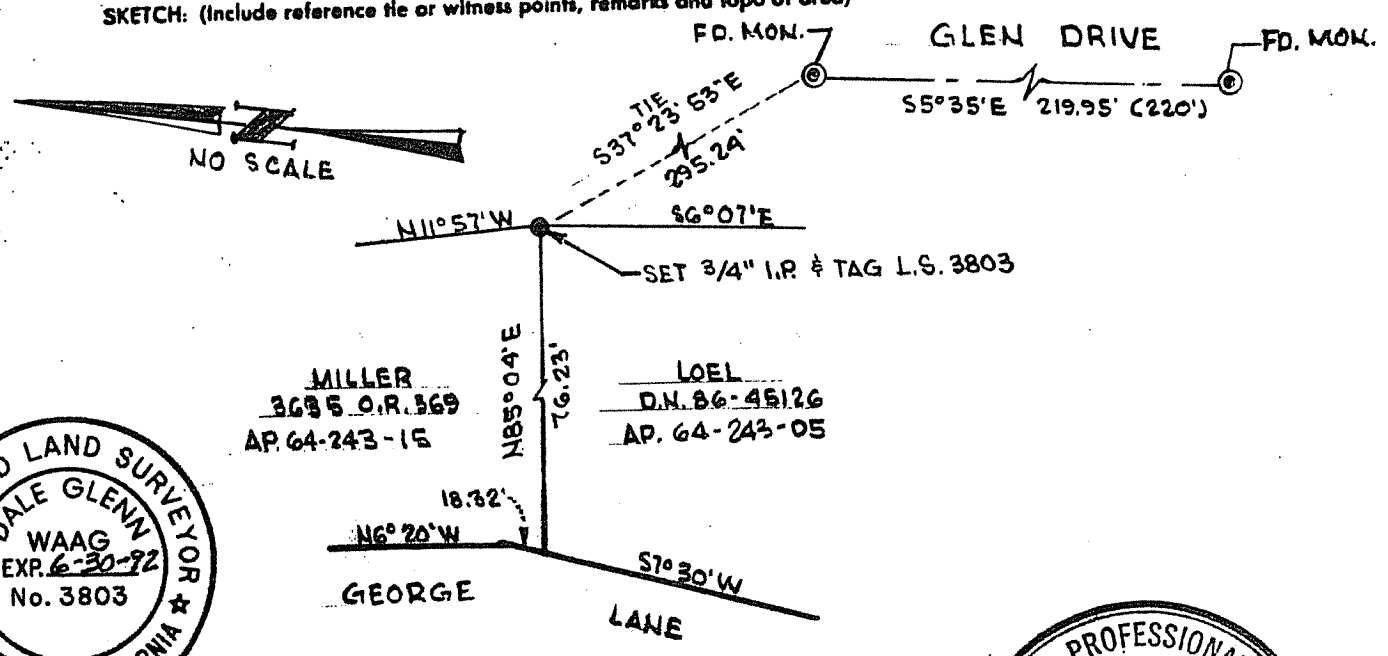
SET 3/4" I.P. @ NORTHEAST CORNER LANDS OF LOEL O.N. 86-45126 — SAUSALITO

CALIFORNIA COORDINATE SYSTEM ORDER: FIRST SECOND THIRD

STATIONS USED: NGS (USC & GS) STATE COUNTY OTHER STATION _____ STATION _____

ZONE _____ ELEVATION _____ NORTHINGS (Y) _____ EASTINGS (X) _____

SKETCH: (Include reference tie or witness points, remarks and topo of area)



SURVEYOR'S CERTIFICATE

THIS CORNER RECORD WAS PREPARED BY ME OR UNDER MY DIRECTION IN CONFORMANCE WITH THE LAND SURVEYORS ACT ON MARCH 16 1988

SIGNED: A. G. Waag

L.S. or R.C.E. No.: LS 3803

REGISTERED PROFESSIONAL ENGINEER

MICHAEL BAKER

COUNTY SURVEYOR'S CERTIFICATE

THE CORNER RECORD WAS RECEIVED _____ 19____ AND EXAMINED AND FILED _____ 19____

BY [Signature]

TITLE: DEPUTY CO. SURVEYOR

DOCUMENT No. _____

STATE OF CALIFORNIA

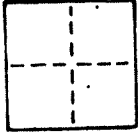
STATEMENT ON BACK OF _____

EXPIR. 10/26/90

CORNER RECORD

COUNTY OF MARIN T. _____ R. _____ MERIDIAN _____ CALIFORNIA

CORNER TYPE: GOVT. CORNER MEANDER RANCHO CONTROL OTHER
CORNER IDENTIFICATION — DATE OF VISIT _____ 19__



CORNER — LEFT AS FOUND FOUND AND TAGGED REESTABLISHED OBLITERATED CORNER RESULT

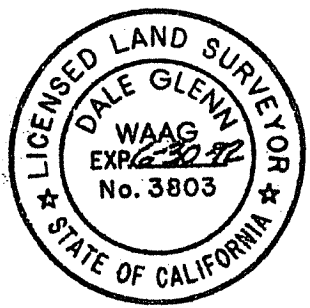
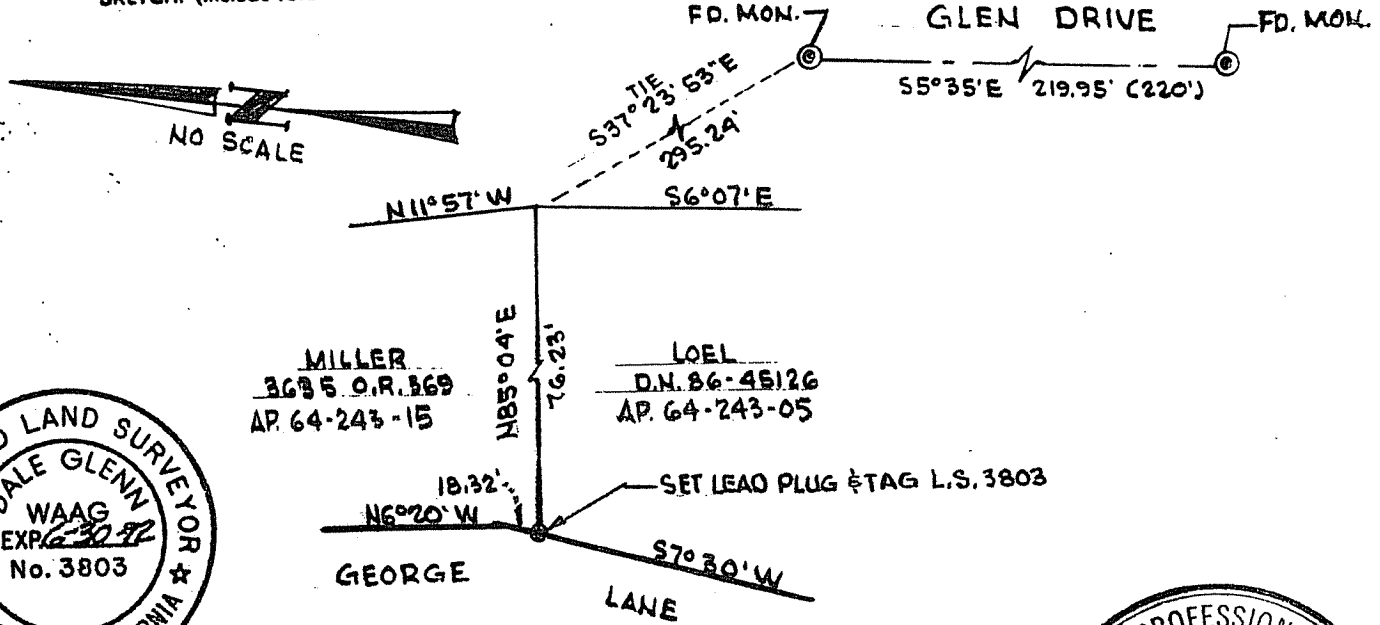
PHYSICAL DESCRIPTION OF CORNER FOUND; EVIDENCE AND METHOD USED TO IDENTIFY OR REESTABLISH

PHYSICAL DESCRIPTION OF MONUMENTS RESULT OR PERPETUATED

SET LEAD PLUG & TAG ON EASTERLY LINE OF GEORGE LANE - SAUSALITO

CALIFORNIA COORDINATE SYSTEM ORDER: FIRST SECOND THIRD
STATIONS USED: NGS (USC & GS) STATE COUNTY OTHER STATION _____ STATION _____
ZONE _____ ELEVATION _____ NORTHINGS (Y) _____ EASTINGS (X) _____

SKETCH: (Include reference tie or witness points, remarks and topo of area)



MILLER
3695 O.R. 869
AP. 64-243-15

LOEL
D.N. 86-45126
AP. 64-243-05

18.32'
N6°20'W
GEORGE LANE
76.23'
N85°04'E
S7°30'W
SET LEAD PLUG & TAG L.S. 3803
S6°07'E
S37°23'53'E
295.24'
FD. MON.
GLEN DRIVE
S5°35'E 219.95' (220')
FD. MON.

SURVEYOR'S CERTIFICATE
THIS CORNER RECORD WAS PREPARED BY ME OR UNDER MY DIRECTION IN CONFORMANCE WITH THE LAND SURVEYORS ACT ON MARCH 16 1988
SIGNED: D.M. Waag
I.S. or R.C.E. No.: LS3803

COUNTY SURVEYOR'S CERTIFICATE
THE CORNER RECORD WAS RECEIVED AND EXAMINED AND FILED BY: [Signature] 2819
TITLE: DEPUTY CO. SURVEYOR
DOCUMENT No. _____
STATEMENT ON BACK OF SHEET

